

girl.

the practice rooms echo with rock and roll, jazz piano and opera; a sculpting room overlooks the gardens, and there is an excellent theatrical library. The bulletin boards spill over with job and agency ads and notices of clothes, costumes, wigs and theater tickets for sale. According to one resident, it's "a most interesting place, full of sensitive people radiating energy and hope, very grateful to be there."

Frances De Pauw International House, also in Hollywood, is Methodist-affiliated and draws students and non-show-biz working girls. The buildings are modern and pleasant, and the whole place is very group-think, wholesome. Lots of field trips, theater-in-the-round, dance performances, readings, discussion groups (the "who am I, where am I going" type). Good-looking, tweedy young men frequent the place. "People really seem to communicate here—it's closer and warmer than the other Los Angeles residences," says one of the girls.

There's an attractive Evangeline in downtown Los Angeles, near MacArthur Park. Inside are mirrored walls, chandeliers, lots of bustle in the library and sunny bedrooms. There is a heated pool in a sheltered courtyard. The girls look with-it.

In San Francisco, a favored place for new settlers is The Lodge—coed, chic and elegantly Victorian. A San Franciscan describes its guests as "young, refined, well-dressed and caught up in city living." Students, alas, are not welcomed at The Lodge, but they will

be warmly received at St. Margaret's, a women's residence run by the Catholic Ladies' Aid Society. It's chaste but cheerful. Another possibility, Swanson's Residence Club, is noticeably coed: boys and girls are scattered haphazardly over every floor, "sharing experiences and bathrooms," as our local correspondent puts it. Swanson's is budget-priced, but rather bleak.

If you plan to settle in Philadelphia, Detroit, St. Louis or some other city not mentioned above, here are some good ways to start the residence hunt. First, get a list from the local YWCA or YWHA of its branches in your prospective home. Second, inquire at any church; most are members of some parent body (such as the United Methodist Church) which may sponsor residences around the country. The Salvation Army operates Evangelines in Detroit, Minneapolis, St. Louis, Pittsburgh, Seattle and San Francisco, in addition to those already discussed here. Whatever you do, it's wise not to leave home without having arranged for a place to stay. Once you have that, it's easy enough to look for other quarters you think will be more congenial. Write or telephone ahead for reservations, and be prepared with references.

Residences in every city are a mixed lot, and it takes some research to find the one that's best for you. Few hope to harbor you indefinitely, but as a point of departure for life in a big city, they are well worth considering.

THE END

TRACES of Love...

Faded photograph, covered now with lines and creases. Tickets torn in half, memories in bits and pieces. Traces of love long ago that didn't work out right. Traces of love

Ribbons from her hair, souvenirs of days together. The ring she used to wear, pages from an old love letter. Traces of love long ago that didn't work out right. Traces of love with me tonight.*

© 1968 Low-Sal Music, Inc.

A new album for now moments

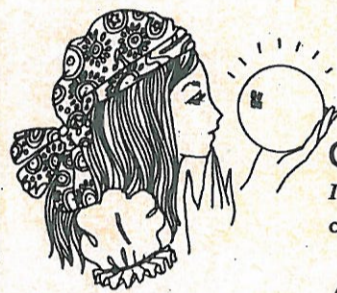
TRACES CLASSICS IV

Featuring Dennis Yost



Available on Liberty 3 & 4 Track Stereo Tape Cartridges & Compact Cassettes

Teens ask Toni ...



Q. All I want is a little curve in my hair. I'd have a perm—but what if it turns out curly?? A.N., Duluth, Minn.

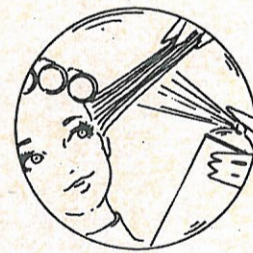
A. It won't—unless you want it to, when your perm's New Advance Look Toni.

There's nothing "iffy" about how it's going to turn out! You'll know, beforehand, with Advance Look Toni—the first perm that lets you decide exactly how much curl you'll get! It lets a girl be sure of getting just what her hairdo calls for. Curly curl ... or mostly body ... or simply the "little curve" you want. Why delay? Put that mini-curve in your hair, and keep it there, the Advance Look way. No "surprise" ending when you start with *this* perm! You're the boss—with New Advance Look Toni!



Q. Any ideas for a quickie set between shampoos? After a couple of days my set's so draggy it's like dead! F.P., Camden, N.J.

A. Turn on! With Lektro Set—the fab ten-minute heat setting spray: A new way to get a new set with dry hair! (TONI socks it to you!) Now—no need for putting up with draggy dos, between shampoos. Today, all it takes is Lektro Set and ten minutes under a dryer to turn on a fresh, bouncy, hold-crazy set! Do this: As you roll, spray your dry hair (strand by strand) with Lektro Set. In just ten minutes—the heat from your dryer turns on Lektro Set's special holding ingredients. You'll brush out the softest, holdingest set you ever got from dry hair! Try it; whizzy New Lektro Set! By Toni.



Any questions about hair care? Write Carol Douglas, The Toni Company, Box 3600, Chicago, Illinois 60654. Include your complete name, address, and zip code.

Advertisement